

Published in final edited form as:

J Surg Res. 2008 December ; 150(2): 196–203. doi:10.1016/j.jss.2008.02.010.

Complement component C5a mediates hemorrhage-induced intestinal damage

Sherry D. Fleming^{*,1,2}, Lauren M. Phillips^{*,3}, John D. Lambris[†], and George C. Tsokos[‡]

^{*} *Division of Biology, Kansas State University, Manhattan, KS 66506*

[†] *Pathology and Laboratory Medicine, University of Pennsylvania, Philadelphia, PA*

[‡] *Division of Rheumatology, Beth Israel Deaconess Medical Center, Harvard Medical School, Boston, MA*

Abstract

Background—Complement has been implicated in the pathogenesis of intestinal damage and inflammation in multiple animal models. Although the exact mechanism is unknown, inhibition of complement prevents hemodynamic alterations in hemorrhage.

Materials/Methods—C57Bl/6, complement 5 deficient (C5^{-/-}) and sufficient (C5^{+/+}) mice were subjected to 25% blood loss. In some cases, C57Bl/6 mice were treated with C5a receptor antagonist (C5aRa) post-hemorrhage. Intestinal injury, leukotriene B₄, and myeloperoxidase production were assessed for each treatment group of mice.

Results—Mice subjected to significant blood loss without major trauma develop intestinal inflammation and tissue damage within two hours. We report here that complement 5 (C5) deficient mice are protected from intestinal tissue damage when subjected to hemorrhage (Injury score = 0.36 compared to wildtype hemorrhaged animal injury score = 2.89; $p < 0.05$). We present evidence that C5a represents the effector molecule because C57Bl/6 mice treated with a C5a receptor antagonist displayed limited intestinal injury (Injury score = 0.88), leukotriene B₄ (13.16 pg/mg tissue) and myeloperoxidase (115.6 pg/mg tissue) production compared to hemorrhaged C57Bl/6 mice ($p < 0.05$).

Conclusion—Complement activation is important in the development of hemorrhage-induced tissue injury and C5a generation is critical for tissue inflammation and damage. Thus, therapeutics targeting C5a may be useful therapeutics for hemorrhage-associated injury.

Keywords

complement; mucosa; rodent

¹Corresponding Author: Sherry Fleming 18 Ackert Hall Kansas State University Manhattan, KS 66506 785-587-9602 sdflemin@ksu.edu.

²This study was supported by the following: a grant from the Dept. of Defense, NIH Grants GM-62134, and P20-RR017686 and P20-RR016475 from the Institutional Development Award (IDeA) Program of the NCR, HHMI Undergraduate Science Educational Grant, Terry C. Johnson Center for Cancer Research, and the Division of Biology, Kansas State University.

³L.P. was supported as an HHMI Undergraduate Scholar.

⁴The opinions or assertions contained herein are the private views of the authors and are not to be construed as official or reflecting the views of the US Department of the Army, or the US Department of Defense.

Publisher's Disclaimer: This is a PDF file of an unedited manuscript that has been accepted for publication. As a service to our customers we are providing this early version of the manuscript. The manuscript will undergo copyediting, typesetting, and review of the resulting proof before it is published in its final citable form. Please note that during the production process errors may be discovered which could affect the content, and all legal disclaimers that apply to the journal pertain.

Introduction

Hemorrhage and the accompanying hemorrhagic shock result in clinical complications and systemic inflammation (1,2). During hemorrhage, there is decreased systemic perfusion leading to decreased blood flow to the intestine, kidney and skeletal muscle (3,4). As the intestine normally receives more blood from the heart than any other organ with the splanchnic circulation consisting of up to 25–30% of the total blood volume, hemorrhage-induced decreased intestinal blood flow and associated vasoconstriction, may result in a functional intestinal ischemia (5). In other models of ischemia, this process leads to local and systemic damage and is suggested to be critical in the induction of multiple organ failure (6). Mechanisms of ischemia and subsequent reperfusion-induced intestinal mucosal injury include oxidative stress and excessive complement activation (7–9).

Excessive complement activation results in tissue damage in many animal models including septic shock, transplantation and mesenteric or skeletal muscle ischemia (reviewed in (10)). Previously, we showed that C5a has a significant role in a mouse model of intestinal ischemia/reperfusion-induced damage and eicosanoid production (8). In addition, others have shown that C5 and specifically, C5a, is critical for neutrophil and monocyte chemotaxis in either myocardial or mesenteric ischemic models (11–14). Finally, in a renal ischemia/reperfusion model, C5a blockade prevents damage that is not dependent on neutrophil infiltration, but by alteration of the chemokine profile (13). Thus, therapeutics which target complement activation in the intestine prevent damage in other animal models and the same therapeutics may be beneficial in hemorrhage.

Complement activation is also critical in rat models of hemorrhagic shock. Depletion of complement prevented clinical signs of hemorrhagic shock (15) and hemodynamic changes were prevented with complement inhibition with soluble complement receptor 1 (sCR1) (3, 16) or C1-inhibitor (17). Recent studies showed that anti-C5 antibody treatment decreases the resuscitation fluid volume required to improve mean arterial pressure (18). Total inhibition of complement activation and the membrane attack complex, however, may lead to sepsis and other infectious complications due to the inhibition of all complement cascades. It is critical therefore, to identify the specific molecules involved in the complement mediated damage in order to achieve targeted complement inhibition. Excess of C5a is lethal in a rat hemorrhage model (15) and a C5a receptor antagonist decreased the inflammatory response within rat intestine and lungs in a model of intestinal ischemia with hemorrhage (19). However, it is unclear if inhibition of C5a activity is sufficient to prevent or attenuate intestinal damage and its sequelae.

Many animal models of hemorrhage involve rats and include traumatic injury (19–24) and the use of heparin (3,16) which complicates determination of the complement activation factors. In addition, rat models of hemorrhagic shock preclude the use of genetically modified animals. Here we show that in the absence of major trauma, loss of one-quarter of the total blood volume in mice results in significant intestinal inflammation and damage. We present evidence that C5 deficient mice do not develop signs of inflammation and tissue damage and more importantly, blockade of the action of C5a with a synthetic C5a receptor antagonist limited tissue damage in wild type mice.

Materials and Methods

Mice

C57Bl/6, B10.D2-Hc⁰H2^dH2-T18^c/oSnJ and B10.D2-Hc¹H2^dH2-T18^c/nSnJ (C5^{-/-} and C5^{+/+}, respectively) male mice (6–8 wks old) were obtained from Jackson Laboratories (C5^{+/+}, and C5^{-/-}) or bred (C57Bl/6) and maintained in the Division of Biology at Kansas State

University. All mice were allowed food and water ad libitum and kept in 12-hour light-to-dark facilities. Research was conducted in compliance with the Animal Welfare Act and other federal statutes and regulations relating to animals and experiments involving animals and experiments were performed according to the principles set forth in the *Guide for the Care and Use of Laboratory Animals* (Institute of Laboratory Animal Resources, National Research Council, 1996 edition).

Hemorrhage Protocol

After a 1 week acclimatization period, mice were anesthetized using ketamine (16 mg/kg) and xylazine (80 mg/kg). All procedures were performed with the animals breathing spontaneously and body temperature maintained at 37° C using a water-circulating heating pad. Mice undergoing hemorrhage were subjected to retro-orbital removal of 25% of the calculated blood volume (approximately 0.5 ml) over a 90 sec period (25,26). Volume of blood to be removed was based on weight and ranged from 400 ul to 600 ul; (body weight in grams \times 0.02 (27)). The determined blood volume was measured in water and marked on both the collection tubes and the capillary tubing used for retro-orbital punctures. This ensured that the correct amount would be withdrawn. A single retro-orbital puncture was sufficient for blood collection. The 2 hr mortality rate was less than 1%. Sham mice were subjected to similar procedures with no blood removal. In some studies, the murine C5aRa (25 μ g/mouse) was injected intravenously 5–15 min after either hemorrhage or sham treatment (28). An additional experimental group consisted of mice subjected to hemorrhage followed one hour later by administration of 200 μ l normal saline i.v. C5aRa was synthesized and similar dosages administered as described previously (28). To prevent spontaneous complement activation, all studies were performed in the absence of heparin. At 2 hr post-hemorrhage, mice were euthanized and tissues collected for analysis. Intestinal tissues were formalin fixed for analysis of injury and frozen sections were obtained for immunohistochemistry.

Injury Score

Formalin fixed tissue sections were transversely sectioned and H+E stained for analysis of injury. Injury was scored by an observer unaware of the treatment given using a six-tiered scale adapted from Chiu et al. that was described previously (7,8,29). The average damage score was assigned to an approximately 2 cm section of mid-jejunum intestine (75–150 villi) after grading each villus from 0–6. Normal villi were assigned a score of zero; villi with tip distortion were assigned a score 1; score 2 was assigned when Guggenheims' spaces are present; villi with patchy disruption of the epithelial cells were assigned a score of 3; score 4 was assigned to villi with exposed but intact lamina propria with epithelial sloughing; a score of 5 was assigned when the lamina propria was exuding; last, villi that display hemorrhage or denuded were assigned a score of 6.

Villus Height/Crypt Depth

Villus height/crypt depth ratio of at least 15 individual villi per animal was measured using Metavue computer software (Molecular Devices, Sunnyvale, CA). The average of 3–8 animals per treatment group is reported.

Leukotriene B₄, myeloperoxidase and total peroxidase production

Ex vivo intestinal supernatants were generated for total peroxidase, leukotriene B₄ (LTB₄) and myeloperoxidase (MPO) analysis as described previously (30,31). Briefly, 1 cm mid-jejunum sections were minced, washed and resuspended in oxygenated Tyrode's buffer (Sigma, St. Louis, MO) for 20 min at 37°C. Following incubation, the supernatants and tissues were collected and stored at –80°C until assayed. Commercially available LTB₄ EIA kit (Cayman Chemicals #520111, Ann Arbor, MI) and MPO specific ELISA kit (Cell Sciences, #HK201

Canton, MA) were used to determine LTB₄ and MPO concentrations. Total tissue peroxidase was determined by incubating supernatants with 3, 3', 5, 5' tetramethylbenzidine (TMB) (KPL Chemicals, Rockville, MD) and the reaction stopped with 0.18 M sulfuric acid. The OD450 was determined and compared with a horseradish peroxidase (Sigma) standard. The concentration of each factor was reported as pg/mg intestinal tissue.

Immunohistochemistry

Tissues snap frozen in TBS freezing media (ThermoFisher, Waltham, MA) were sectioned at 6–8 μ for immunohistochemistry staining as described previously (7,8). Briefly, nonspecific antibody binding sites were blocked by treatment with a solution of 20% rabbit serum (Jackson ImmunoResearch, West Grove, PA) in PBS for 30 minutes prior to incubation with rabbit anti-mouse C3 antibody (Cell Sciences #HP8012) overnight at 4° C. The tissue was then incubated with donkey anti-rabbit secondary antibody conjugated to Texas Red (Jackson ImmunoResearch). After washing, the slides were mounted with ProLong Gold (Invitrogen, Carlsbad, CA). A blinded observer examined the slides by fluorescent microscopy using a Nikon 80i fluorescent microscope equipped with appropriate filters and CoolSnapCf camera (Photometrics, Tucson, AZ) and analyzed by MetaVue Imaging software (Molecular Devices).

Statistics

The data are presented as mean \pm SEM and compared by one-way ANOVA with Neuman-Keuls post-hoc analysis (GraphPad, San Diego, CA). Differences were considered significant when $p < 0.05$.

RESULTS

Hemorrhage induces intestinal damage

A recent study showed that during porcine hemorrhage, intestinal blood flow decreased proportionally to total volume, but these studies did not examine the extent of intestinal damage (4). To confirm that blood loss induced intestinal damage, mice were sham-treated or retro-orbitally bled to remove 25% blood volume based on weight. Previous reports indicated that removal of 25% blood volume induced liver damage and inflammation (27). In addition, preliminary data indicated the presence of significant intestinal damage. Intestinal tissues were collected 2 hr post bleeding and analyzed for mucosal injury. As shown in Fig. 1A, and D, sham treatment did not result in damage of the intestines as indicated by preservation of villi tips (Fig. 1A) and low injury score (Fig. 1D). In contrast, significant mucosal damage occurred at 2 hr post hemorrhage as shown in Fig. 1B and 1D. Intestinal damage at 2 hr post hemorrhage included disintegration of the epithelial integrity, exuding lamina propria from the villi (Fig. 1B) which resulted in increased injury score (Fig. 1D). Also, indicative of damage, hemorrhage resulted in significantly shorter villi without altering the crypt depth as indicated by villus height/crypt depth ratio (Fig. 1E).

Previous studies indicate that administration of even small volumes of normal saline, alters inflammation and organ damage (18,20). Because future studies will require treatment with small volumes of complement inhibitor suspended in saline, it was necessary to determine if these quantities of saline altered intestinal damage and inflammation. Therefore, some groups of both sham and hemorrhaged mice were administered 200 μ l normal saline i.v. Although there was a slight increase in injury, Fig. 1C, 1D and 1E indicates small volumes of normal saline administered at 1 hr post hemorrhage did not significantly alter the 2 hr post hemorrhage injury score ($p = 0.092$), or villus height vs. crypt depth ratio (Fig. 1C, 1D and 1E).

Intestinal damage and inflammation is complement-dependent

As other forms of intestinal mucosal damage are complement mediated, we assessed C3 deposition on the intestine of mice subjected to hemorrhage by immunofluorescence (Fig. 2). Significant amounts of C3 were deposited on the intestinal tissues of hemorrhaged mice (Fig. 2B), whereas no C3 was deposited to the intestines of sham-treated mice (Fig. 2A).

To investigate if complement has a critical role in hemorrhage-induced intestinal damage, C5 deficient ($C5^{-/-}$) mice and C5 sufficient mice ($C5^{+/+}$) were subjected to hemorrhage and intestinal injury assessed 2 hr later. As shown in Fig. 3A, sham treatment did not induce intestinal damage in either strain. Similar to C57Bl/6 mice, the complement sufficient mice subjected to hemorrhage developed significant intestinal damage (Fig. 3A, B) manifested by increased injury scores and decreased villus height/crypt depth ratio compared to sham-treated mice. In contrast, hemorrhage-induced, intestinal damage was significantly attenuated in $C5^{-/-}$ mice compared to the $C5^{+/+}$ mice with mean injury scores of 0.36 and 2.89, respectively (Fig. 3A, B and C). Villi remained tall, the villus height/crypt depth ratio did not change and the epithelial layer remained intact in $C5^{-/-}$ mice after hemorrhage (Fig. 3C). As expected, C3 was deposited in both $C5^{+/+}$ and $C5^{-/-}$ mice despite the lack of damage (data not shown).

Excessive inflammation, characterized by neutrophil infiltration, mediates hemorrhage induced liver and lung injury (17,26,32). To determine if hemorrhage induces intestinal neutrophil infiltration, the production of chemotactic factor LTB_4 was determined. As shown in Fig. 4A hemorrhage induced significant LTB_4 production. In addition, intestinal tissues from hemorrhaged, complement sufficient mice contained increased amounts of myeloperoxidase when compared with sham-treated mice (Fig. 4B). In contrast, when $C5^{-/-}$ mice were subjected to hemorrhage, the release of LTB_4 was significantly reduced, suggesting that the recruitment of neutrophils to the intestine is complement dependent (Fig. 4A). In addition, intestinal tissue from $C5^{-/-}$ mice subjected to hemorrhage did not contain any myeloperoxidase (Fig. 4B).

C5a receptor antagonist attenuates intestinal damage and inflammation

We considered it likely that C5a generated following complement activation is responsible for the observed neutrophil infiltration in C5 sufficient mice subjected to hemorrhage and that inhibition of its action would limit the inflammatory response and tissue damage. To test this possibility we treated male C57Bl/6 mice with murine C5a receptor antagonist or an equivalent volume of PBS 5–10 min after hemorrhage. In contrast to the PBS-treated C57Bl/6 mice (Fig. 5B), mice injected with C5a receptor antagonist displayed attenuated intestinal mucosal damage (Fig. 5C) with pathology similar to that recorded in the sham group of animals (Fig. 5A). Hemorrhage-induced intestinal injury was decreased significantly in C5a receptor antagonist-treated mice compared to the PBS-treated group of hemorrhaged mice and was comparable to tissue injury observed in the sham group of mice (Fig. 5D). C5a production occurs downstream of C3 activation; therefore, C5a receptor antagonist should not alter C3 deposition. C5a receptor antagonist treatment did not limit the amounts of C3 deposited to the intestine of hemorrhaged mice (Figs. 2 and 6) and the observed C3 deposition in these mice was increased compared to the sham group of animals (Fig. 6A,B). As expected, administration of C5a receptor antagonist decreased LTB_4 production in both sham and hemorrhaged mice (Fig. 7A) and eliminated the hemorrhage-induced increase in myeloperoxidase content (Fig. 7B). Together these data indicate that C5a receptor antagonist can attenuate the hemorrhage-induced chemotactic activity and intestinal tissue damage.

Discussion

Hemorrhage induces intestinal mucosal damage and inflammation with complement activation and influx of neutrophils (3,16). Complement inhibition prevents intestinal damage and decreases vasoconstriction and the subsequent requirement for fluid to maintain the mean arterial pressure (18,19,33). Our study shows that low blood volume also leads to intestinal damage and inflammation in complement sufficient but not in C5 deficient mice. C5a which is produced during complement activation appears to be the culprit because inhibition of its action by C5a receptor antagonist limits both the inflammatory response and intestinal tissue damage.

Complement is known to have a role in the intestinal damage, but the specific pathway or molecules involved are unknown. In ischemia and sepsis models of intestinal damage, C5a has been shown to be required for neutrophil infiltration (8,14,19,34,35). Inhibition of C3a and C5a in rat models of hemorrhage or hemorrhage with vascular clamping prevented decrease in mean arterial pressure and the appearance of acidosis, intestinal permeability and tissue damage (15,19). Our studies extend these observations and suggest the recorded beneficiary effects of complement inhibition on physiological parameters such as mean arterial blood pressure and acid-base balance are probably due to the preceding inhibition of the tissue inflammatory response and damage. Indeed, the administration of C5a receptor antagonist limited the production of the chemotactic factor, LTB₄, and the infiltration of the intestinal tissue by neutrophils as manifested by decreased myeloperoxidase content. C5a receptor antagonist has been shown to be effective in other animal models of inflammation (35,36), including a murine model of mesenteric ischemia/reperfusion (8).

In many animal models, C5a and selective C5a agonists induce hypotension and vascular permeability which are inhibited by blockade of C5a receptor binding (19,33). In other animal models, C5a receptor antagonists attenuate the cobra venom factor mediated or xenotransplant induced blood pressure changes (37,38). However, in other hemorrhage studies, complement depletion did not significantly alter mean arterial pressures within the first 2 hr after hemorrhage (15). Thus, it is possible that administration of the C5 receptor antagonist prevents the hemorrhage-induced hypotension. Additional studies will be needed to determine the exact mechanism of protection provided by the C5a receptor antagonist.

It is possible that the administration of C5 receptor antagonist alters the cytokine milieu that leads to intestinal damage. Previous studies have illustrated that monocytes treated with C5a produce IL-6 (39). Other studies have shown that hemorrhage increases KC, MCP-1, IL-6 and IL-10 serum concentrations in a TLR4-dependent manner (22,40,41). In addition, Meng et.al. showed that IL-6 is critical for the induction of lung and liver damage in response to hemorrhage (32). Therefore, IL-6 and possibly other cytokines or chemokines may be involved in hemorrhage-induced intestinal damage and it is possible that C5a receptor antagonist alters the inflammatory cytokine response.

Previous studies have shown that complement inhibition prevents intestinal damage and decreased vasoconstriction in rat models of hemorrhage (3,16). In a rat model of hemorrhage and mesenteric ischemia, the combination of heparin and C5a receptor antagonist decreased intestinal permeability and tumor necrosis factor production (19). The unavoidable use of heparin in practically all hemorrhage models complicates the interpretation of the data because of the extensive interaction of the complement and coagulation activation cascades (42). Our studies offer a unique model to study the role of complement activation in a murine model of hemorrhage without the interference of confounding factors such as trauma, tubing and the need for anti-coagulation drugs.

In conclusion, we present evidence in a simple model of murine hemorrhage which does not involve the use of trauma or anti-coagulants that complement activation is responsible for inflammation and tissue damage in the intestine. C5 deficient mice were found to be completely protected from hemorrhage-induced intestinal damage and the administration of a C5a receptor antagonist limits both the inflammatory response and tissue damage in the intestine of mice subjected to hemorrhage. The use of complement inhibitors may therefore be of clinical value in people who hemorrhage and they may limit the need for resuscitation fluids.

Acknowledgements

1. The authors thank Ms. Tiffany Moses and Diana Hylton for their technical expertise.

References

1. DeBakey ME, Simeone FA. Battle injuries of the arteries in World War II: an analysis of 2,471 cases. *Ann Surg* 1946;123:534–579. [PubMed: 17858758]
2. Bellamy RF. The causes of death in conventional land warfare: implications for combat casualty care research. *Mil Med* 1984;149:55–62. [PubMed: 6427656]
3. Fruchterman TM, Spain DA, Wilson MA, Harris PD, Garrison RN. Complement inhibition prevents gut ischemia and endothelial cell dysfunction after hemorrhage/resuscitation. *Surgery* 1998;124:782–792. [PubMed: 9781002]
4. Kvarstein G, Mirtheri P, Tonnessen TI. Detection of organ ischemia during hemorrhagic shock. *Acta Anaesthesiol Scand* 2003;675–686. [PubMed: 12803584]
5. Shea-Donohue T.; Anderson, J.; Swiecki, C. Ischemia/reperfusion injury. In: Tsokos, GC.; Atkins, JL., editors. *Combat Medicine*. Totowa, New Jersey: Humana Press; 2003. p. 219-248.
6. Tavaf-Motamen H, Miner TJ, Starnes BW, Shea-Donohue T. Nitric oxide mediates acute lung injury by modulation of inflammation. *J Surg Res* 1998;78:137–142. [PubMed: 9733631]
7. Fleming SD, Anderson J, Wilson F, Shea-Donohue T, Tsokos GC. C5 is required for CD49d expression on neutrophils and VCAM expression on vascular endothelial cells following mesenteric ischemia/reperfusion. *Clin Immunol* 2003;105:55–64. [PubMed: 12584052]
8. Fleming SD, Mastellos D, Karpel-Massler G, Shea-Donohue T, Lambris JD, Tsokos GC. C5a causes limited, polymorphonuclear cell-independent, mesenteric ischemia/reperfusion-induced injury. *Clin Immunol* 2003;108:263–273. [PubMed: 14499250]
9. Rehrig S, Fleming SD, Anderson J, Guthridge JM, Rakstang J, McQueen CE, Holers VM, Tsokos GC, Shea-Donohue T. Complement inhibitor, complement receptor 1-related gene/protein γ -Ig attenuates intestinal damage after the onset of mesenteric ischemia/reperfusion injury in mice. *J Immunol* 2001;167:5921–5927. [PubMed: 11698469]
10. Fleming, SD.; Tsokos, GC. Complement Inhibitors in Rheumatic Diseases. In: Tsokos, GC., editor. *Modern therapeutics in Rheumatic Diseases*. Totowa, NJ: Humana Press; 2000. p. 443-452.
11. Birdsall HH, Green DM, Trial J, Youker KA, Burns AR, MacKay CR, LaRosa GJ, Hawkins HK, Smith CW, Michael LH, Entman ML, Rossen RD. Complement C5a, TGF- β 1, and MCP-1, in sequence, induce migration of monocytes into ischemic canine myocardium within the first one to five hours after reperfusion. *Circulation* 1997;95:684–692. [PubMed: 9024158]
12. Ivey CL, Williams FM, Collins PD, Jose PJ, Williams TJ. Neutrophil chemoattractants generated in two phases during reperfusion of ischemic myocardium in the rabbit: evidence for a role for C5a and interleukin-8. *J Clin Invest* 1995;95:2720–2728. [PubMed: 7769111]
13. de Vries B, Kohl J, Leclercq WKG, Wolfs TGAM, van Bijnen AAJHM, Heeringa P, Buurman WA. Complement factor C5a mediates renal ischemia-reperfusion injury independent of neutrophils. *J Immunol* 2003;170:3883–3889. [PubMed: 12646657]
14. Arumugam TV, Shiels IA, Woodruff TM, Reid RC, Fairlie DP, Taylor SM. Protective effect of a new C5a receptor antagonist against ischemia-reperfusion injury in the rat small intestine. *J Surg Res* 2002;103:260–267. [PubMed: 11922743]

15. Younger JG, Sasaki N, Waite MD, Murray HN, Saleh EF, Ravage ZA, Hirschl RB, Ward PA, Till GO. Detrimental effects of complement activation in hemorrhagic shock. *J Appl Physiol* 2001;90:441–446. [PubMed: 11160040]
16. Spain DA, Fruchterman TM, Matheson PJ, Wilson MA, Martin AW, Garrison RN. Complement activation mediates intestinal injury after resuscitation from hemorrhagic shock. *J Trauma* 1999;46:224–233. [PubMed: 10029025]
17. Horstick G, Kempf T, Lauterbach M, Bhakdi S, Kopacz L, Heimann A, Malzahn M, Horstick M, Meyer J, Kempski O. C1-esterase-inhibitor treatment at early reperfusion of hemorrhagic shock reduces mesentery leukocyte adhesion and rolling. *Microcirculation* 2001;8:427–433. [PubMed: 11781815]
18. Peckham RM, Handrigan MT, Bentley TB, Falabella MJ, Chrovian AD, Stahl GL, Tsokos GC. C5-blocking antibody reduces fluid requirements and improves responsiveness to fluid infusion in hemorrhagic shock managed with hypotensive resuscitation. *J Appl Physiol* 2007;102:673–680. [PubMed: 17068213]
19. Harkin DW, Romaschin A, Taylor SM, Rubin BB, Lindsay TF. Complement C5a receptor antagonist attenuates multiple organ injury in a model of ruptured abdominal aortic aneurysm. *J Vasc Surg* 2004;39:196–206. [PubMed: 14718840]
20. Homma H, Deitch EA, Feketeova E, Lu Q, Berezina TL, Zaets SB, Machiedo GW, Xu DZ. Small volume resuscitation with hypertonic saline is more effective in ameliorating trauma-hemorrhagic shock-induced lung injury, neutrophil activation and red blood cell dysfunction than pancreatic protease inhibition. *J Trauma* 2005;59:266–272. [PubMed: 16294064]
21. Kiang JG, Peckham RM, Duke LE, Shimizu T, Chaudry IH, Tsokos GC. Androstenediol inhibits the trauma-hemorrhage-induced increase in caspase-3 by downregulating the inducible nitric oxide synthase pathway. *J Appl Physiol* 2007;102:933–941. [PubMed: 17110508]
22. Thobe BM, Frink M, Hildebrand F, Schwacha MG, Hubbard WJ, Choudhry MA, Chaudry IH. The role of MAPK in Kupffer cell toll-like receptor (TLR) 2-, TLR4-, and TLR9-mediated signaling following trauma-hemorrhage. *J Cell Physiol* 2007;210:667–675. [PubMed: 17117477]
23. Hildebrand F, Thobe BM, Hubbard WJ, Choudhry MA, Pape HC, Chaudry IH. Effects of 17beta-estradiol and flutamide on splenic macrophages and splenocytes after trauma-hemorrhage. *Cytokine* 2006;36:107–114. [PubMed: 17207634]
24. Hildebrand F, Hubbard WJ, Choudhry MA, Frink M, Pape HC, Kunkel SL, Chaudry IH. Kupffer cells and their mediators: the culprits in producing distant organ damage after trauma-hemorrhage. *Am J Pathol* 2006;169:784–794. [PubMed: 16936255]
25. Lomas-Niera JL, Perl M, Chung CS, Ayala A. Shock and hemorrhage; An overview of animal models. *Shock* 2005;24:33–39. [PubMed: 16374370]
26. Arcaroli J, Yang KY, Yum HK, Kupfner J, Pitts TM, Park JS, Strassheim D, Abraham E. Effects of catecholamines on kinase activation in lung neutrophils after hemorrhage or endotoxemia. *J Leukoc Biol* 2002;72:571–579. [PubMed: 12223526]
27. Rajnik M, Salkowski CA, Thomas KE, Li YY, Rollwagen FM, Vogel SN. Induction of early inflammatory gene expression in a murine model of nonresuscitated, fixed-volume hemorrhage. *Shock* 2002;17:322–328. [PubMed: 11954835]
28. Mastellos D, Papadimitriou JC, Franchini S, Tsonis PA, Lambris JD. A novel role of complement: mice deficient in the fifth component of complement (C5) exhibit impaired liver regeneration. *J Immunol* 2001;166:2479–2486. [PubMed: 11160308]
29. Chiu CJ, McArdle AH, Brown R, Scott HJ, Gurd FN. Intestinal mucosal lesion in low-flow states. *Arch Surg* 1970;101:478–483. [PubMed: 5457245]
30. Fleming SD. Natural antibodies, autoantibodies and complement activation in tissue injury. *Autoimmunity* 2006;39:379–386. [PubMed: 16923537]
31. Fleming SD, Monestier M, Tsokos GC. Accelerated ischemia/reperfusion-induced injury in autoimmunity-prone mice. *J Immunol* 2004;173:4230–4235. [PubMed: 15356174]
32. Meng ZH, Dyer K, Billiar TR, Tweardy DJ. Essential role for IL-6 in postresuscitation inflammation in hemorrhagic shock. *Am J Physiol Cell Physiol* 2001;280:C343–351. [PubMed: 11208530]

33. Harkin DW, Marron CD, Rother RP, Romaschin A, Rubin BB, Lindsay TF. C5 complement inhibition attenuates shock and acute lung injury in an experimental model of ruptured abdominal aortic aneurysm. *Br J Surg* 2005;92:1227–1234. [PubMed: 16078298]
34. Czermak BJ, Sarma V, Pierson CL, Warner RL, Huber-Lang M, Bless NM, Schmal H, Friedl HP, Ward PA. Protective effects of C5a blockade in sepsis. *Nat Med* 1999;5:788–792. [PubMed: 10395324]
35. Riedemann NC, Guo RF, Neff TA, Laudes IJ, Keller KA, Sarma JV, Markiewski MM, Mastellos D, Strey CW, Pierson CL, Lambris JD, Zetoune FS, Ward PA. Increased C5a receptor expression in sepsis. *J Clin Invest* 2002;110:101–108. [PubMed: 12093893]
36. Heller T, Hennecke M, Baumann U, Gessner JE, Meyer zu Vilsendorf A, Baensch M, Boulay F, Kola A, Klos A, Bautsch W, Kohl J. Selection of a C5a receptor antagonist from phage libraries attenuating the inflammatory response in immune complex disease and ischemia/reperfusion injury. *J Immunol* 1999;163:985–994. [PubMed: 10395696]
37. Gaca JG, Appel JZ 3rd, Lukes JG, Gonzalez-Stawinski GV, Leshner A, Palestrant D, Logan JS, Love SD, Holzkecht ZE, Platt JL, Parker W, Davis RD. Effect of an anti-C5a monoclonal antibody indicates a prominent role for anaphylatoxin in pulmonary xenograft dysfunction. *Transplantation* 2006;81:1686–1694. [PubMed: 16794535]
38. Proctor LM, Strachan AJ, Woodruff TM, Mahadevan IB, Ming Williams H, Shiels IA, Taylor SM. Complement inhibitors selectively attenuate injury following administration of cobra venom factor to rats. *International Immunopharmacology* 2006;6:1224. [PubMed: 16782534]
39. Fayyazi A, Scheel O, Werfel T, Schweyer S, Oppermann M, Gotze O, Radzun HJ, Zwirner J. The C5a receptor is expressed in normal renal proximal tubular but not in normal pulmonary or hepatic epithelial cells. *Immunology* 2000;99:38–45. [PubMed: 10651939]
40. Prince JM, Levy RM, Yang R, Mollen KP, Fink MP, Vodovotz Y, Billiar TR. Toll-like receptor-4 signaling mediates hepatic injury and systemic inflammation in hemorrhagic shock. *Journal of American College Surgery* 2006;202:407–417.
41. Frink M, Lu A, Thobe BM, Hsieh YC, Choudhry MA, Schwacha MG, Kunkel SL, Chaudry IH. Monocyte chemoattractant protein-1 influences trauma-hemorrhage-induced distal organ damage via regulation of keratinocyte-derived chemokine production. *Am J Physiol Regul Integr Comp Physiol* 2007;292:R1110–1116. [PubMed: 17095647]
42. Markiewski MM, Nilsson B, Ekdahl KN, Mollnes TE, Lambris JD. Complement and coagulation: strangers or partners in crime? *Trends Immunol* 2007;28:184–192. [PubMed: 17336159]

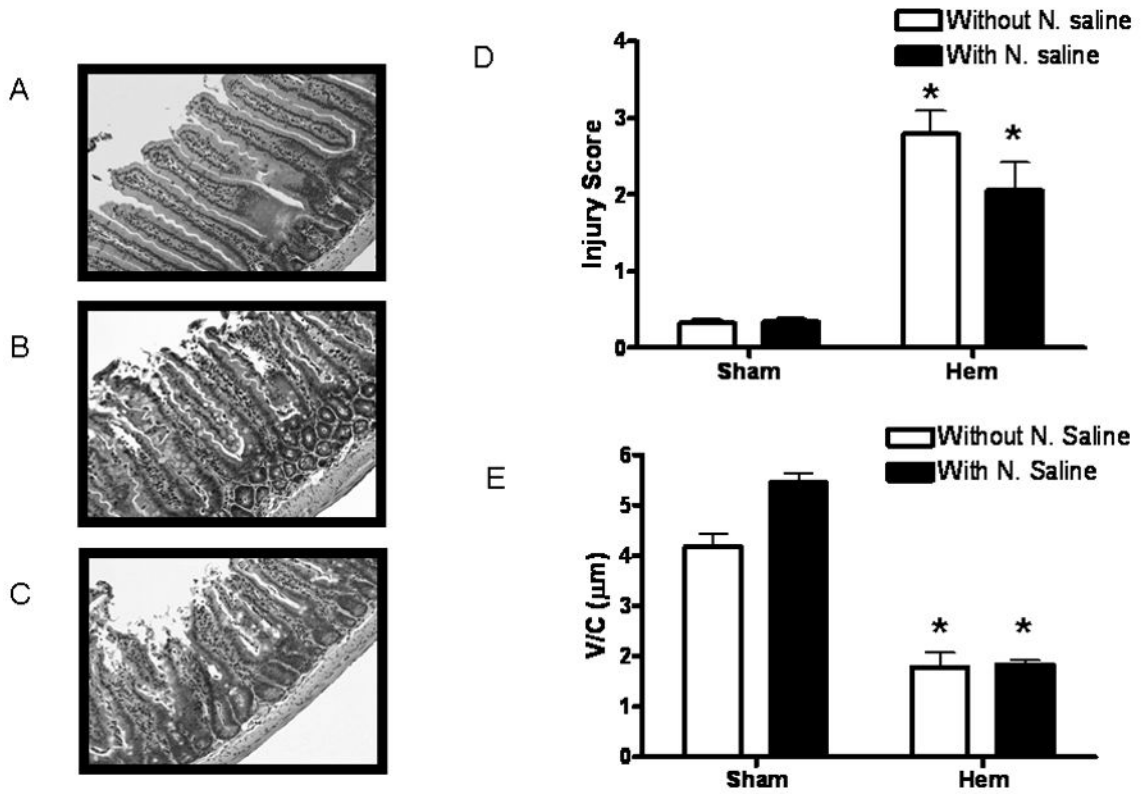


Figure 1. Hemorrhage induces intestinal injury

Wildtype mice which were subjected to sham treatment (A) or hemorrhage (B) followed by a 2 hour recovery period. Intestinal sections were stained with H+E. Additional mice were subjected to hemorrhage followed by an injection of normal saline (C). Formalin fixed intestinal sections from each treatment group were scored for mucosal injury (0–6) as described in *Materials and Methods* (D). Open bars represent no resuscitation fluid, solid bars represent resuscitation fluids were administered. Each bar represents the average ±SEM with 4–10 mice per group. Villus height/crypt depth ratio of individual villi was measured using Metavue computer software (E). All measurements were obtained at a x200 magnification. Open bars represent no normal saline, solid bars represent normal saline was administered. Each bar is the average ±SEM with 3 mice per group. Using ANOVA with Newman-Keuls post hoc test, the asterisk indicates significant difference from the respective sham treatment group ($p \leq 0.05$).

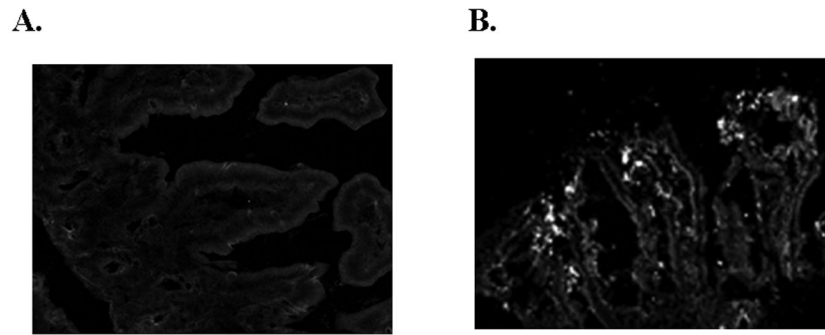


Figure 2. C3 is deposited to intestinal tissue following hemorrhage
Intestinal sections from wildtype mice subjected to sham treatment (A) or hemorrhage (B) and were stained for C3 deposition as described in *Materials and Methods*. Original magnification is x200. Data are representative of three individual experiments.

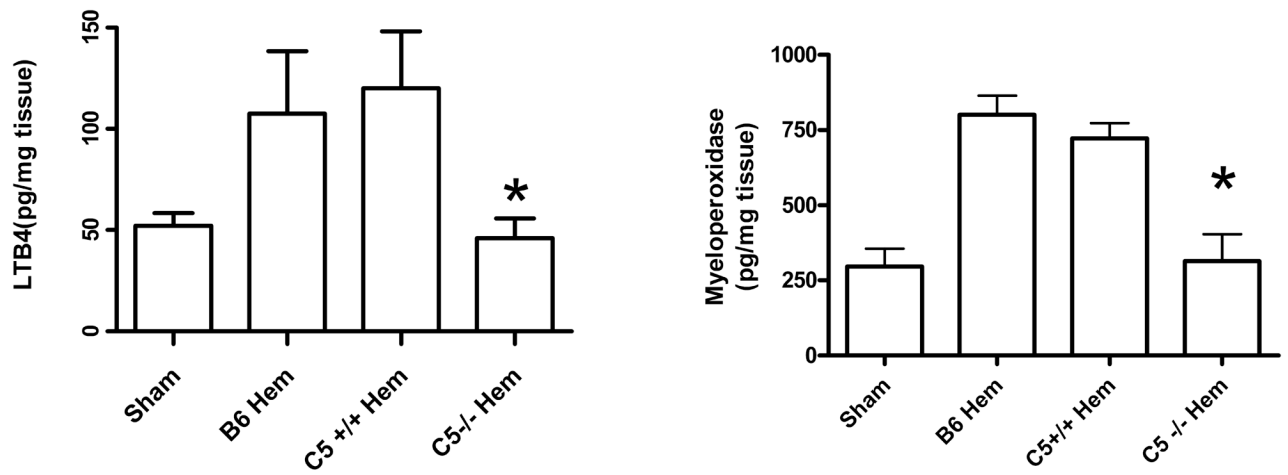


Figure 4. Hemorrhage induces a complement-dependent inflammatory response

Ex vivo, intestinal LTB₄ (A) and myeloperoxidase (B) production from each treatment group was determined by enzyme immunoassays as described in *Materials and Methods*. Each bar represents the average \pm SEM with four to six animals per group. Using ANOVA with Newman-Keuls post hoc test, the asterisk indicates significant difference from the wildtype treatment groups.

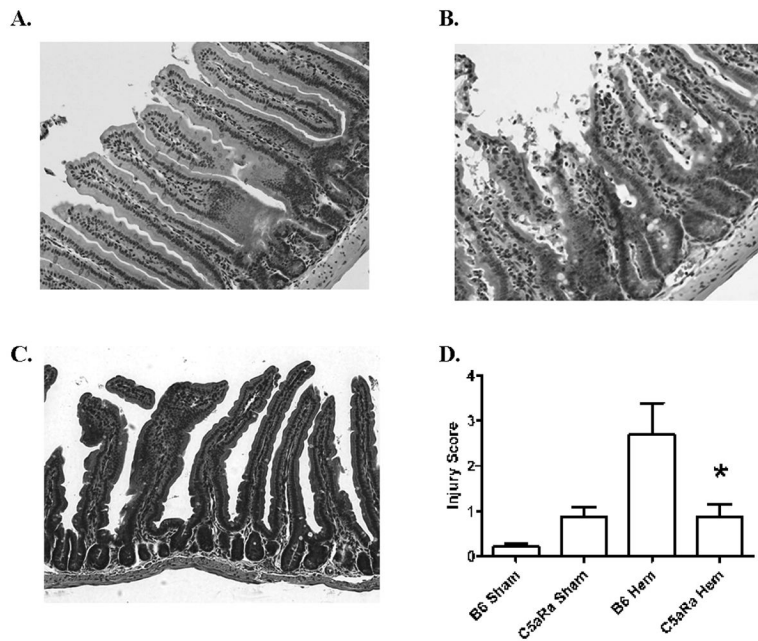


Figure 5. Administration of C5a receptor antagonist after hemorrhage prevents intestinal damage H+E intestinal sections of wildtype mice (B6) with (A, C) or without (B) C5a receptor antagonist (C5aRa) treatment were subjected to sham treatment (A) or hemorrhage (B,C). Mucosal injury (0–6) was determined as described in *Materials and Methods* (D). Using ANOVA with Newman-Keuls post hoc test, the asterisk indicates significant difference from C57Bl/6 hemorrhage group (B6 Hem).

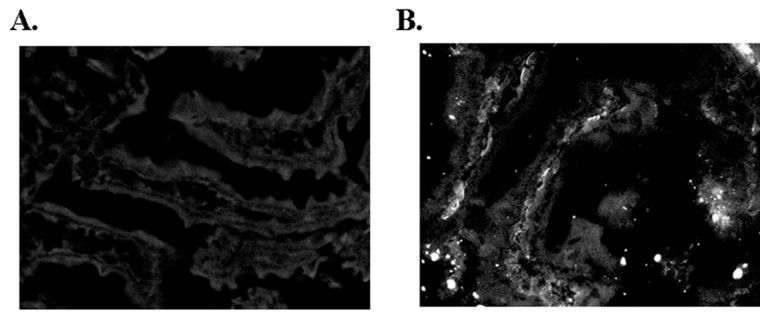


Figure 6. C5a receptor antagonist does not prevent C3 deposition on intestinal tissue
Wildtype mice were subjected to sham (A) or hemorrhage (B) prior to treatment with C5a receptor antagonist (C5aRa) and frozen intestinal sections were stained for C3 deposition as described in *Materials and Methods*. Original magnification is x200. Data are representative of three individual experiments.

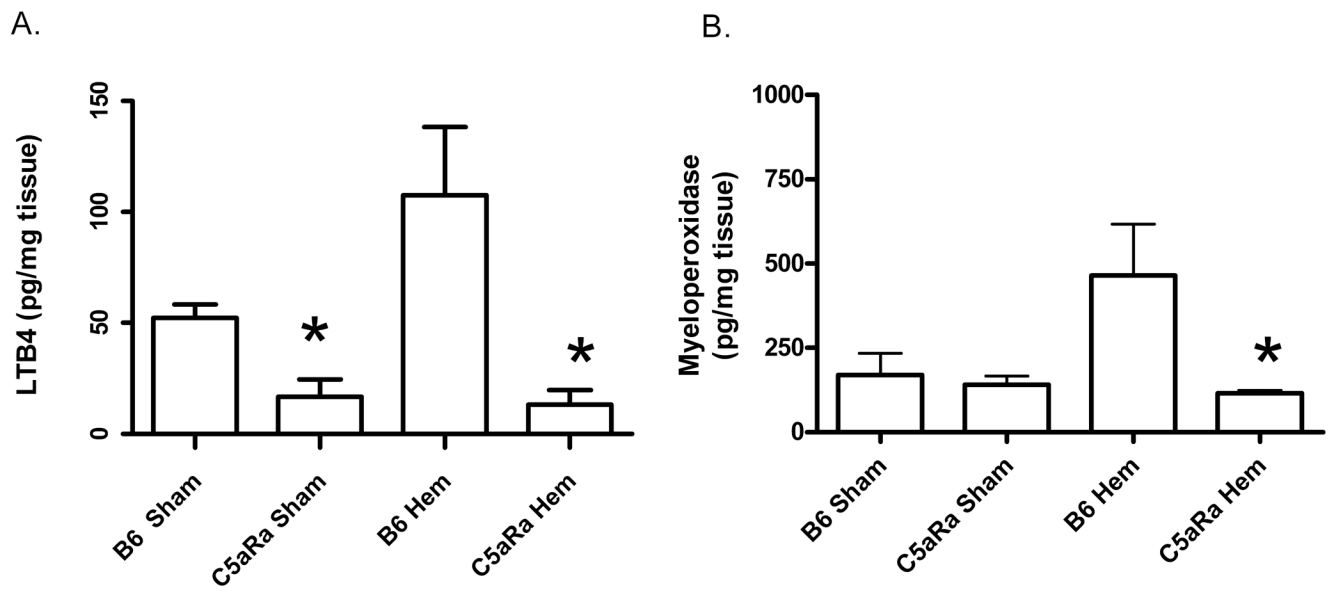


Figure 7. C5a receptor antagonist attenuates leukotriene B₄ and myeloperoxidase production in response to hemorrhage

Ex vivo, intestinal LTB₄ (A) and myeloperoxidase (B) production by each treatment group was determined by enzyme immunoassays as described in *Materials and Methods*. Each bar is average \pm SEM with three to eight animals per group. Using ANOVA with Newman-Keuls post hoc test, asterisks indicate significant difference from the respective wildtype treatment groups (B6).